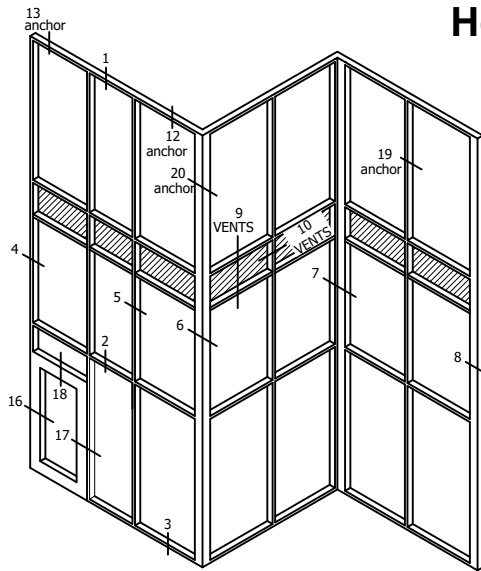


Horizontal Frame Details

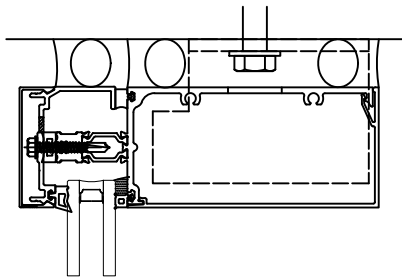


TYPICAL MULTI-SPAN ELEVATION

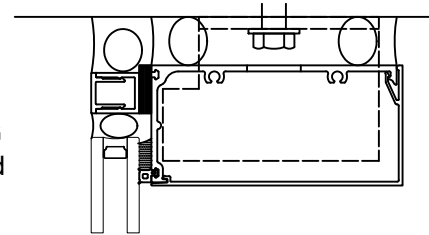
Tubelite reserves the right to change system configuration without prior notice when deemed necessary for product improvements.

Laws and building & safety codes governing the design and use of glazed entrance, window and curtain wall systems vary widely. Tubelite does not control the selection of product configurations, operating hardware or glazing materials, and assumes no responsibility thereof.

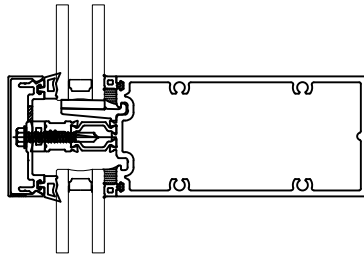
1
Head



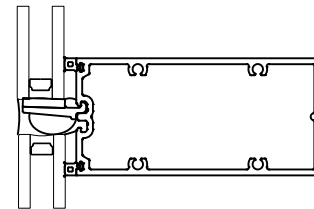
1C
SSG
Head



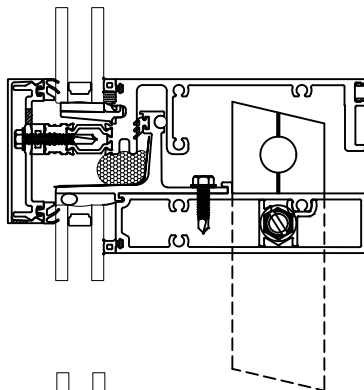
2
Horizontal



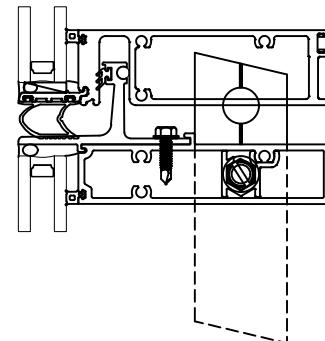
2A
SSG
Horizontal



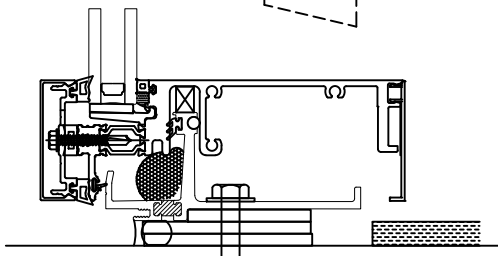
2B
Expansion
Horizontal



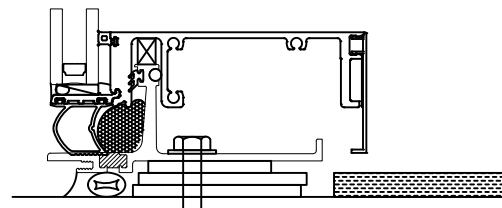
2C
SSG
Expansion
Horizontal



3
Sill



3A
SSG
Sill

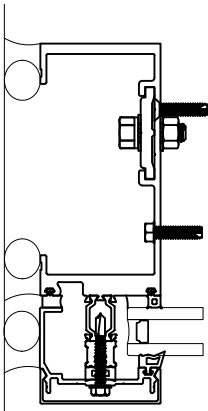


Standard Details
1/4 scale

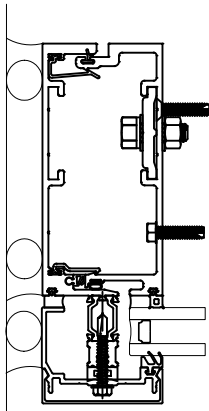
Vertical Frame Details

Tubelite reserves the right to change system configuration without prior notice when deemed necessary for product improvements.

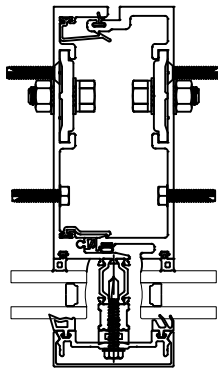
Laws and building & safety codes governing the design and use of glazed entrance, window and curtain wall systems vary widely. Tubelite does not control the selection of product configurations, operating hardware or glazing materials, and assumes no responsibility thereof.



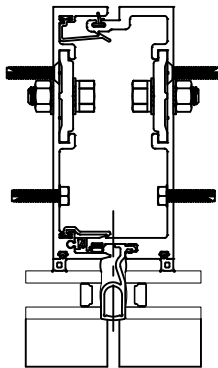
4 & 8
Jamb



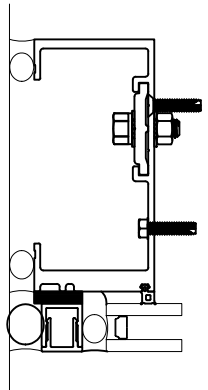
4A & 8A
Jamb



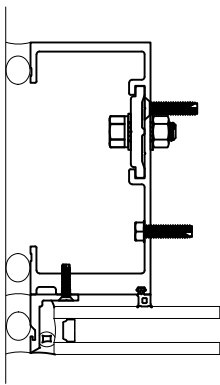
5
Mullion



5A
Mullion



4B & 8B
SSG Jamb



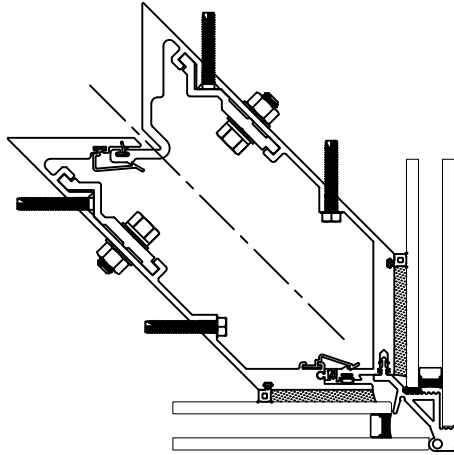
4C & 8C
SSG Jamb

Standard Details
1/4 scale

Corner Frame Details

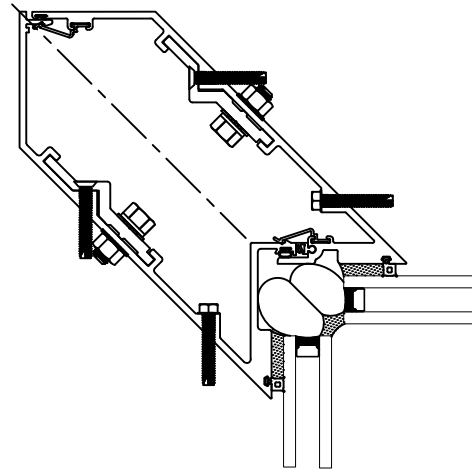
Tubelite reserves the right to change system configuration without prior notice when deemed necessary for product improvements.

Laws and building & safety codes governing the design and use of glazed entrance, window and curtain wall systems vary widely. Tubelite does not control the selection of product configurations, operating hardware or glazing materials, and assumes no responsibility thereof.



6

Outside Corner



7

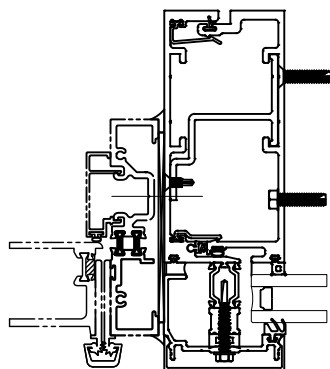
Inside Corner

Standard Details
1/4 scale

Entrance Door Details

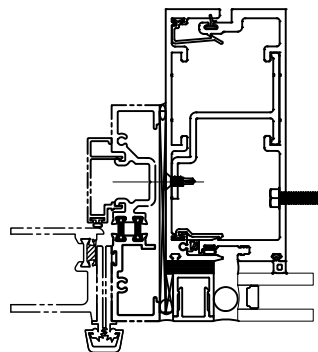
Tubelite reserves the right to change system configuration without prior notice when deemed necessary for product improvements.

Laws and building & safety codes governing the design and use of glazed entrance, window and curtain wall systems vary widely. Tubelite does not control the selection of product configurations, operating hardware or glazing materials, and assumes no responsibility thereof.



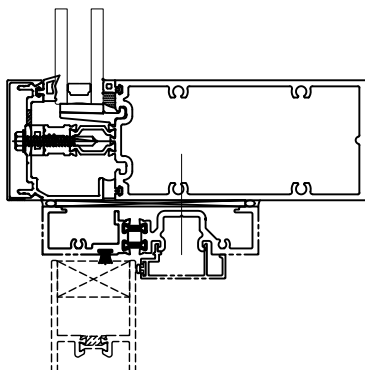
16

Door Intermediate
Vertical



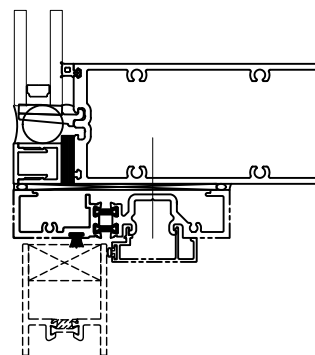
16C

SSG Door
Intermediate Vertical



17

Door Intermediate
Horizontal



17B

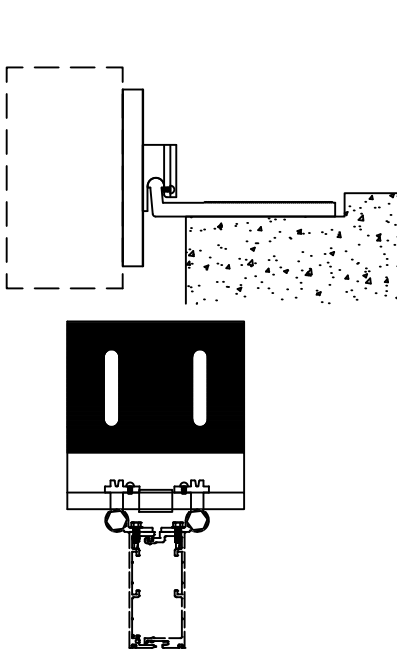
SSG Door Intermediate
Horizontal

Standard Details
1/4 scale

Slab Anchor Details

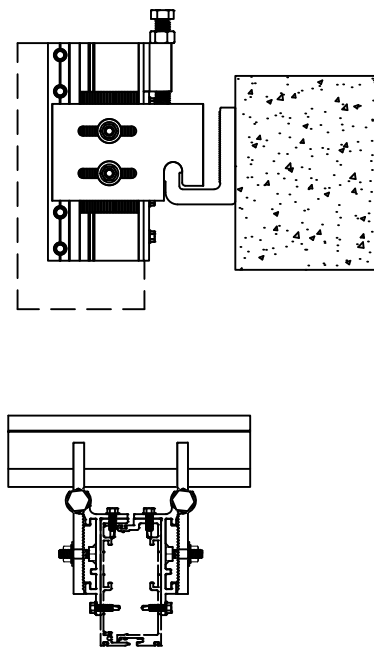
Tubelite reserves the right to change system configuration without prior notice when deemed necessary for product improvements.

Laws and building & safety codes governing the design and use of glazed entrance, window and curtain wall systems vary widely. Tubelite does not control the selection of product configurations, operating hardware or glazing materials, and assumes no responsibility thereof.



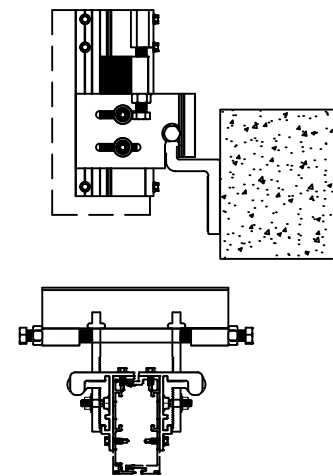
18

Top of Slab Anchor



18A

Face Of Slab "J" Anchor



18B

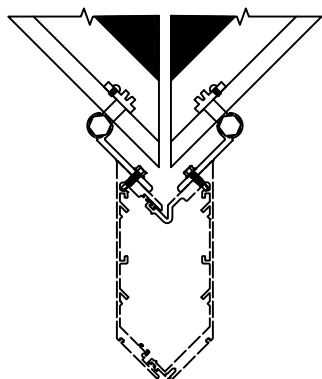
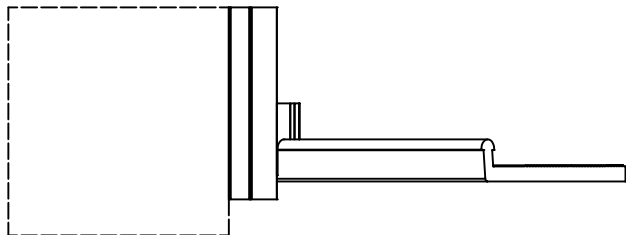
Face Of Slab "Z" Anchor

Standard Details
1/4 scale

Corner Slab Anchor Details

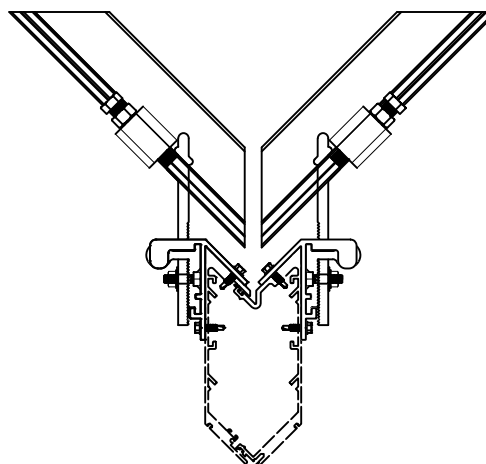
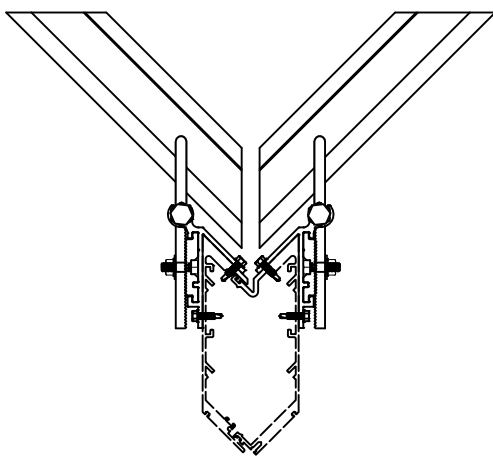
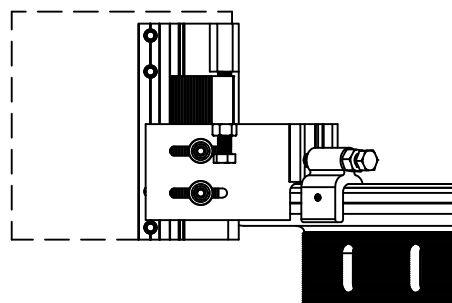
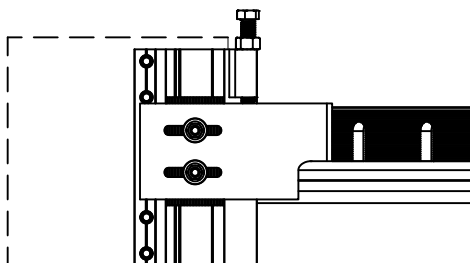
Tubelite reserves the right to change system configuration without prior notice when deemed necessary for product improvements.

Laws and building & safety codes governing the design and use of glazed entrance, window and curtain wall systems vary widely. Tubelite does not control the selection of product configurations, operating hardware or glazing materials, and assumes no responsibility thereof.



18

Top of Slab Anchor



18A

Face Of Slab "J" Anchor

18B

Face Of Slab "Z" Anchor

Standard Details
1/4 scale