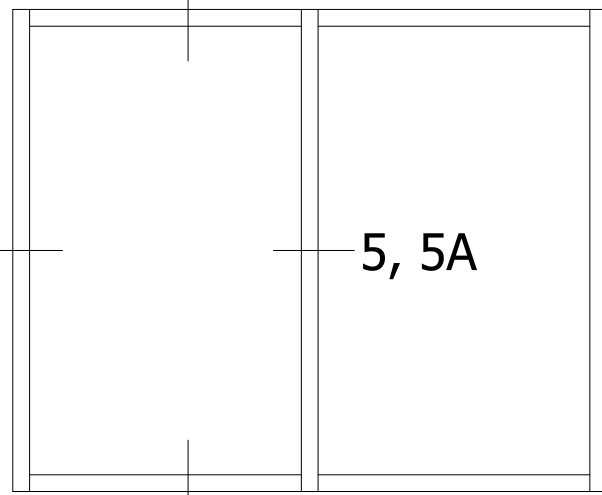
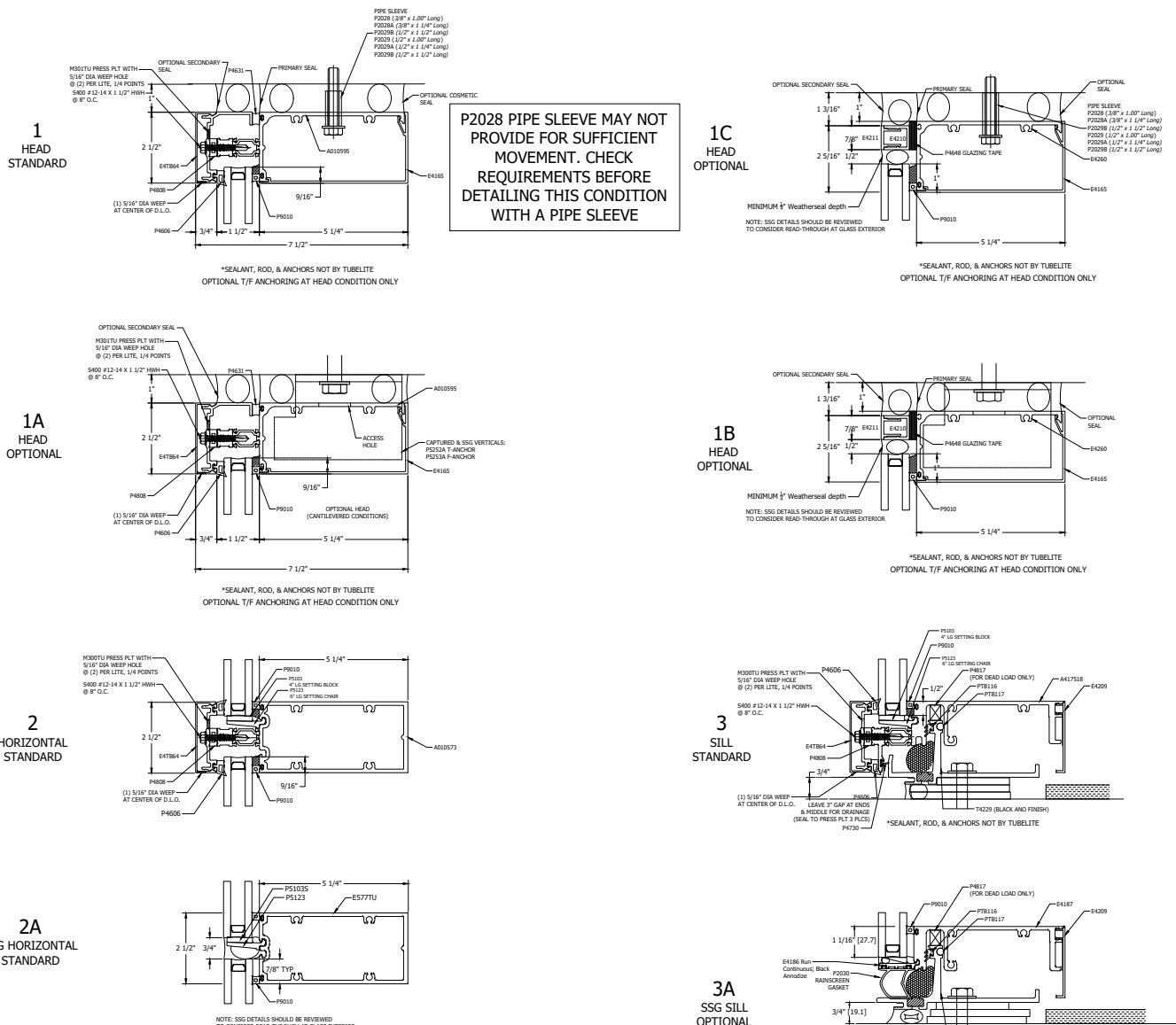


TYPICAL MULTI-SPAN ELEVATION

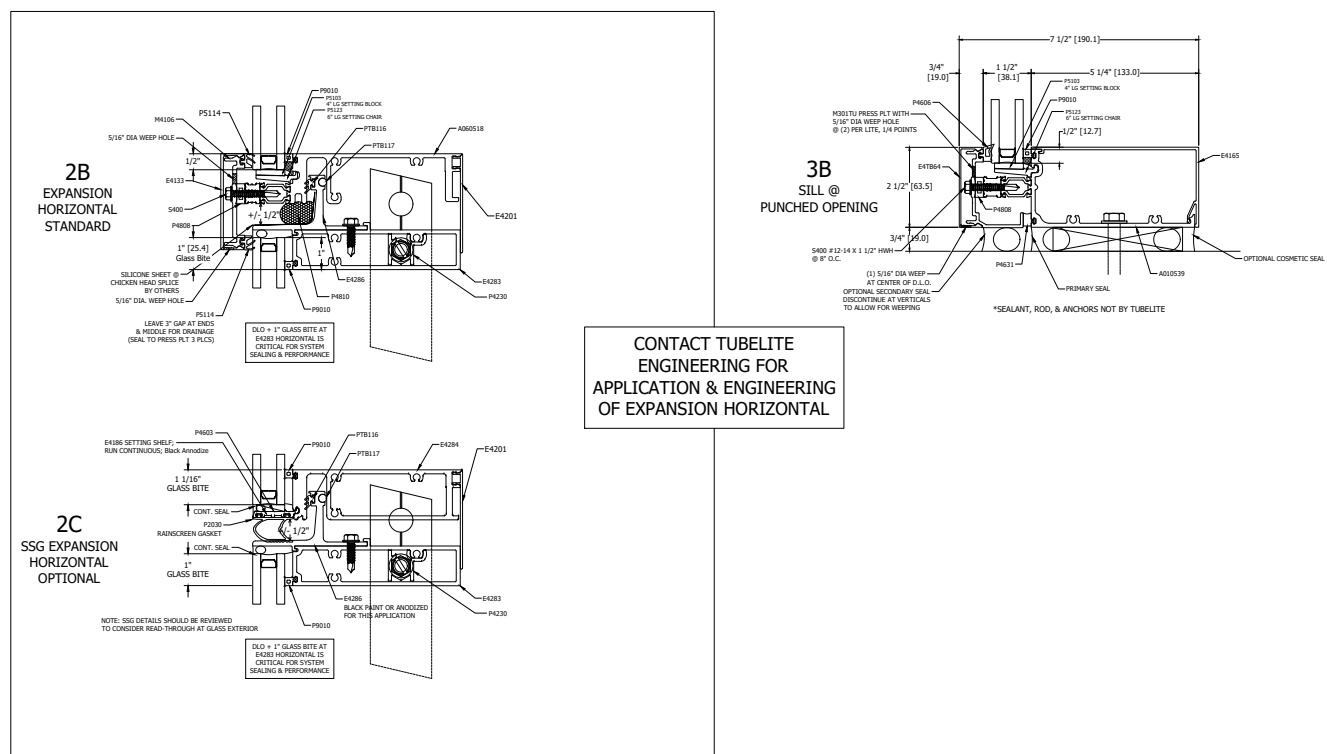
1, 1A, 1B, 1C



TYPICAL PUNCHED OPENING ELEVATION



ENTRANCE
TRANSOM DETAILS



HORIZONTAL DETAILS

400TU SG SHOP GLAZED CURTAIN WALL
5-1/4" BACK MEMBER
ALUMINUM PRESSURE PLATE

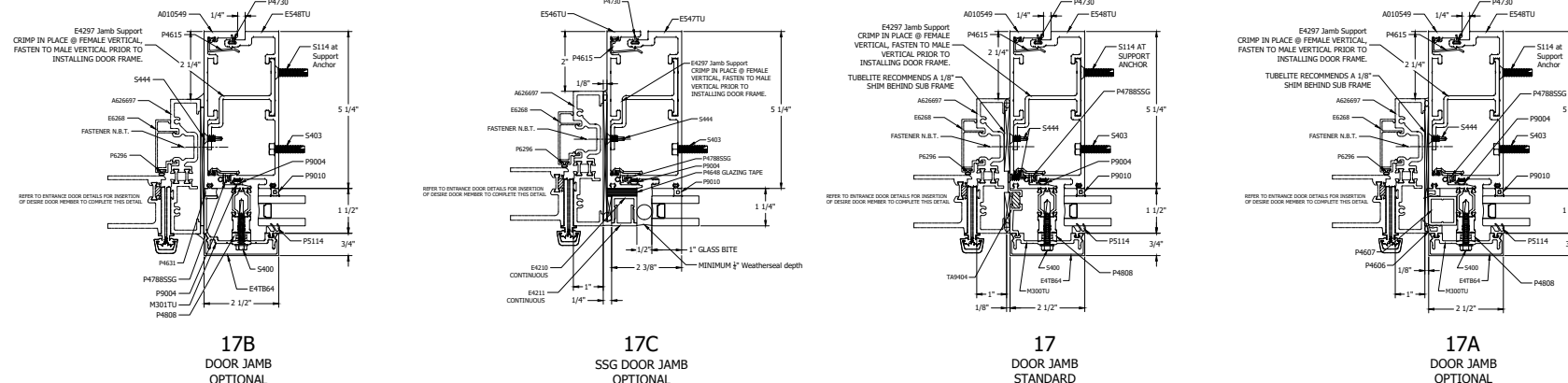
REV	DATE	DESCRIPTION	BY
1.1	2007-12-21	RELEASED FOR REVIEW	JK
1.2	12/8/2021	UPDATED DETAIL 10 10A 16 16A 16B 5B	JK
1.3	12/14/2021	ADDED SSG DOOR DETAIL 10B 16C	JK
A	1/11/2023	PRODUCTION RELEASE	JK
B	1/24/2023	REVISED VERTICAL JAMB PP TO P5114	JK
C	2/1/2023	EXPN. HORIZONTAL GASKET CHANGED TO P5114	JK
D	8/16/2023	REMOVED DIMS AND LEADERS FROM DM PAGES	MAP
E	8/29/2023	ADDED FOS ANCHOR DETAILS	MAP
F	10/5/2023	UPDATED DETAILS PER EC868	RB
G	4/26/2024	ADDED NEW PIPE SLEEVES, EC00919	IK
H	10/29/2024	REPLACE T44228(9) WITH T4228(9)	XPC
I	12/2/2024	ADD PUNCHED OPNG ELEV & DETAILS	GAH
J	5/5/2025	ADDED FRONT AB CLIP TO INCREASE LTB RESISTANCE IN PUNCHED OPENINGS AND HIGHER	RB
K	5/13/2025	UPDATED DOOR DETAILS TO TERRACE	IK
L	8/11/2025	UPDATED E4165 PROFILE, DM LAYOUTS & UPDATED A626667 TO A626697	CAA

FACE COVER PINNING

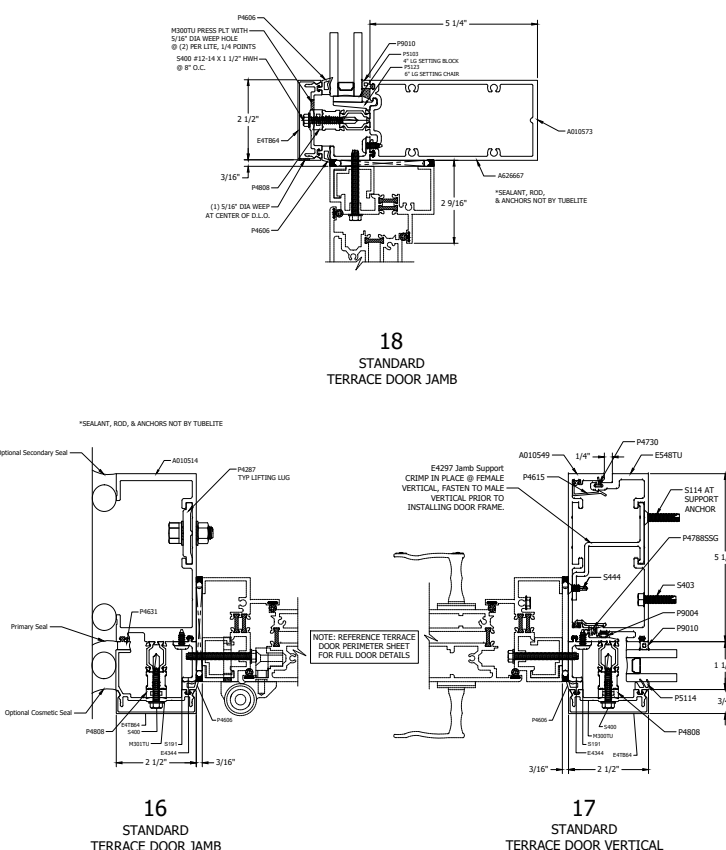
CONTACT TUBELITE
ENGINEERING FOR
ALTERNATE GLASS
THICKNESS OPTIONS

GLAZING INFILL OPTIONS

GLASS SHOWN DOES NOT NECESSARILY REPRESENT FINAL CONFIGURATION.
CONSULT GLASS MANUFACTURER FOR SPECIFIC GLASS NAME UP.

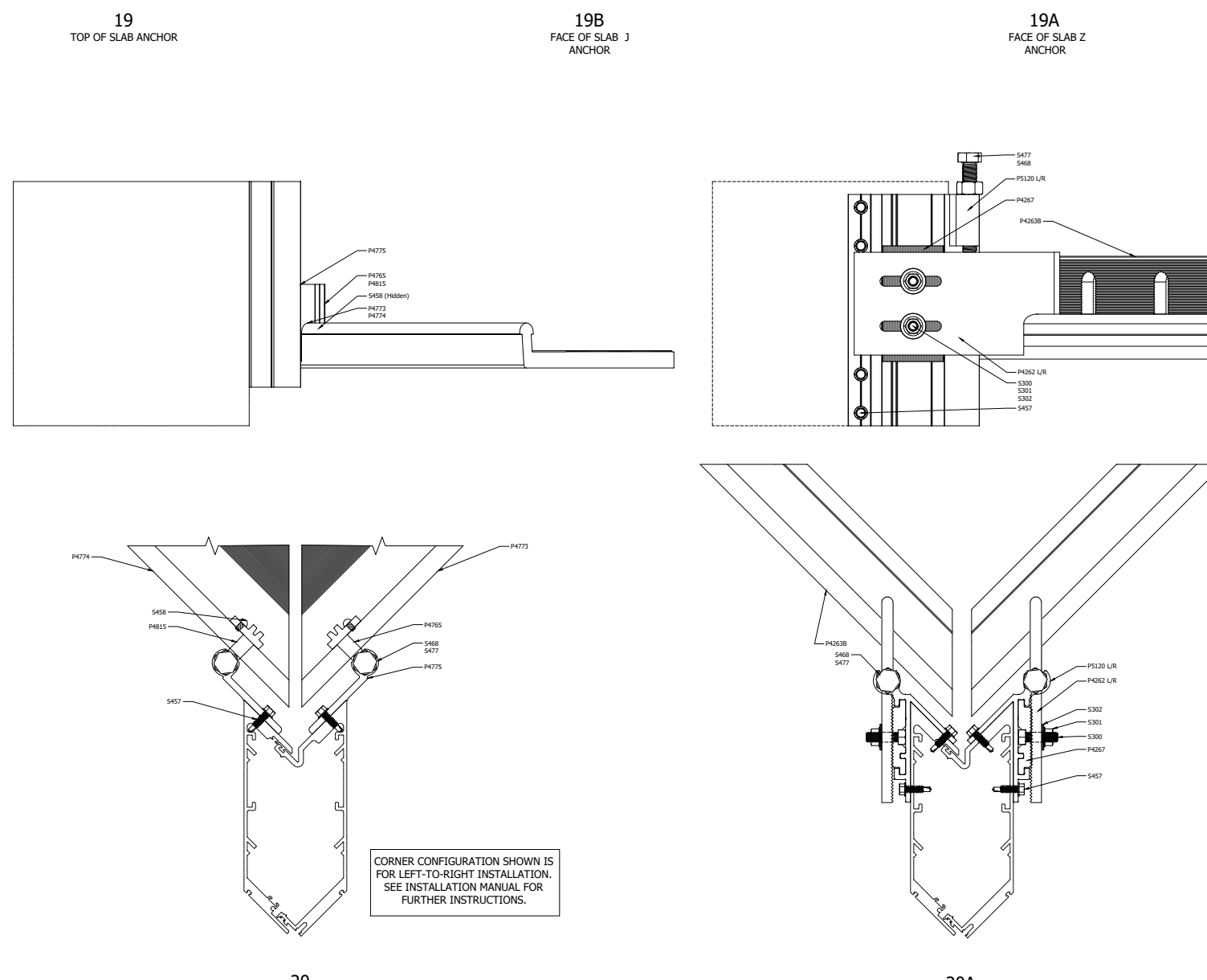
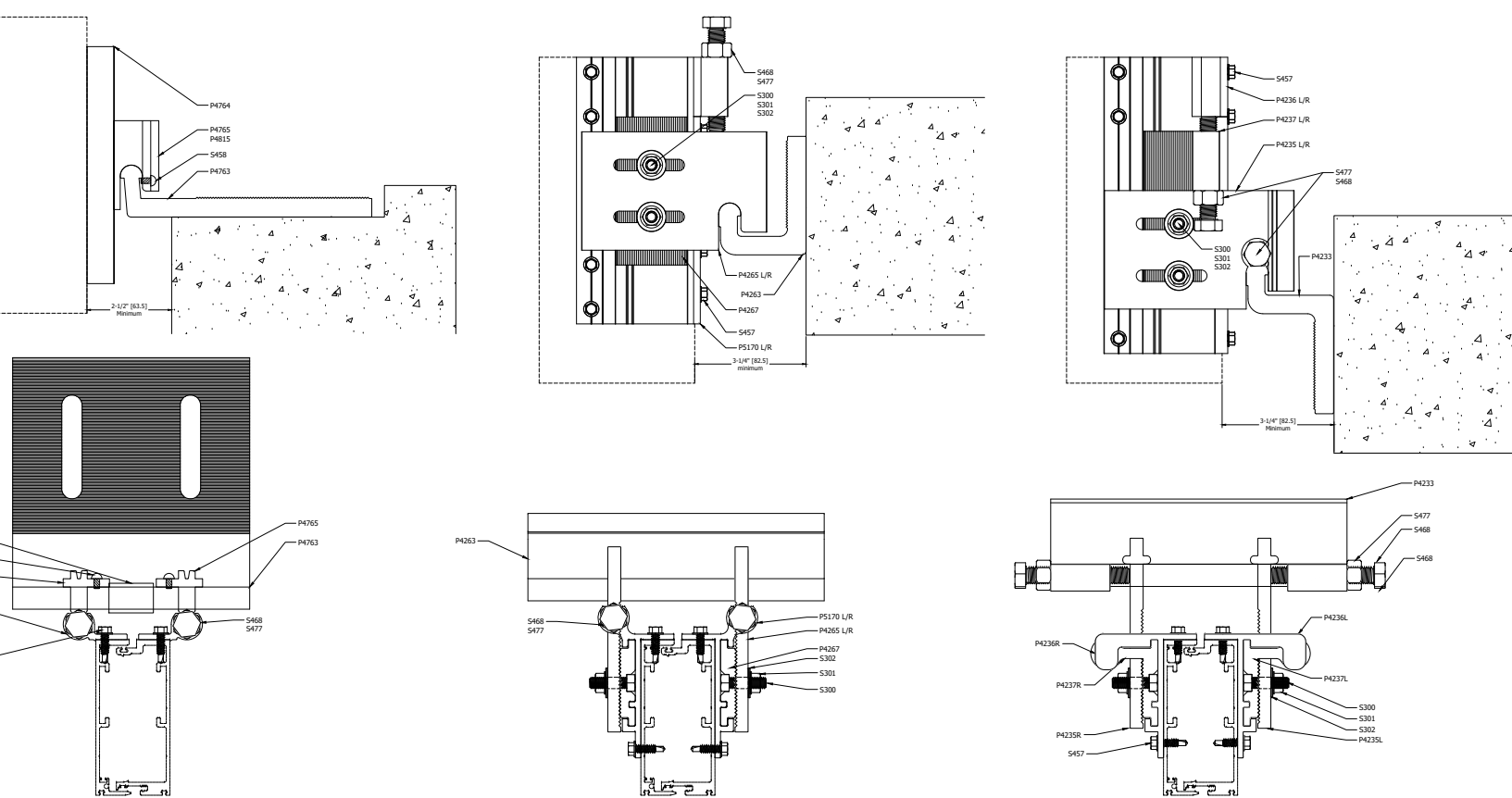
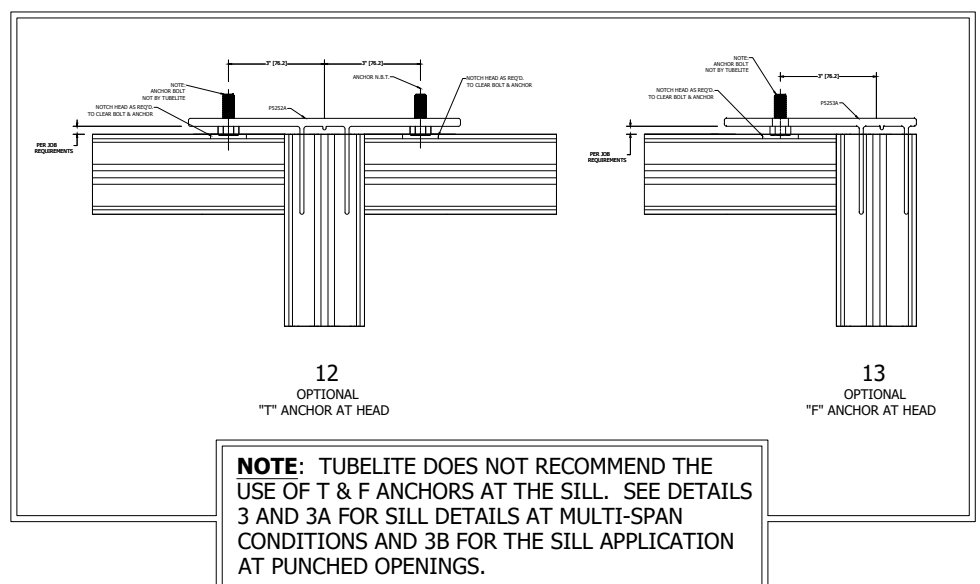
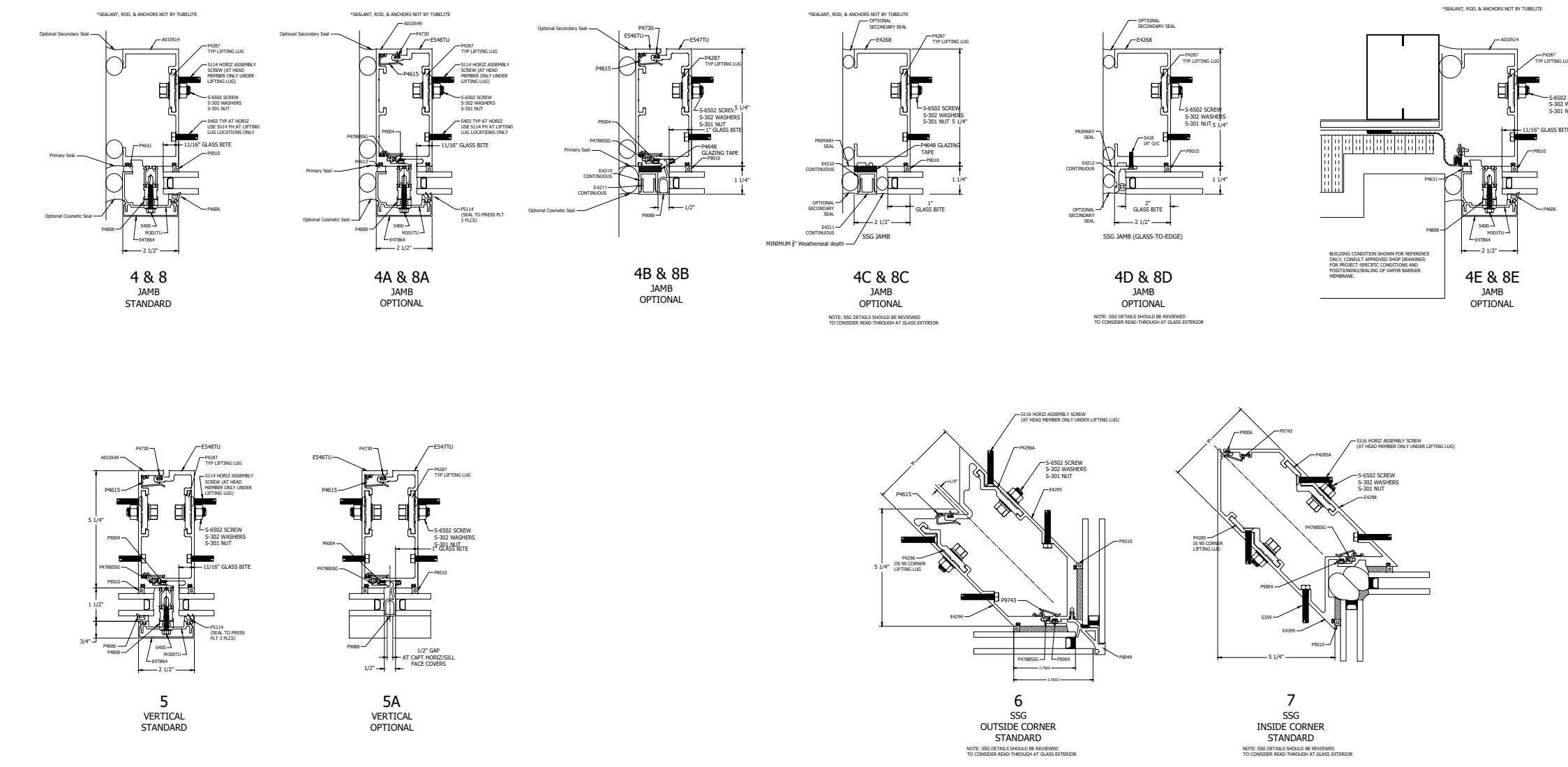


ENTRANCE DOOR DETAILS



TERRACE DOOR DETAILS

VERTICAL DETAILS



TUBELITE
DEPENDABLE